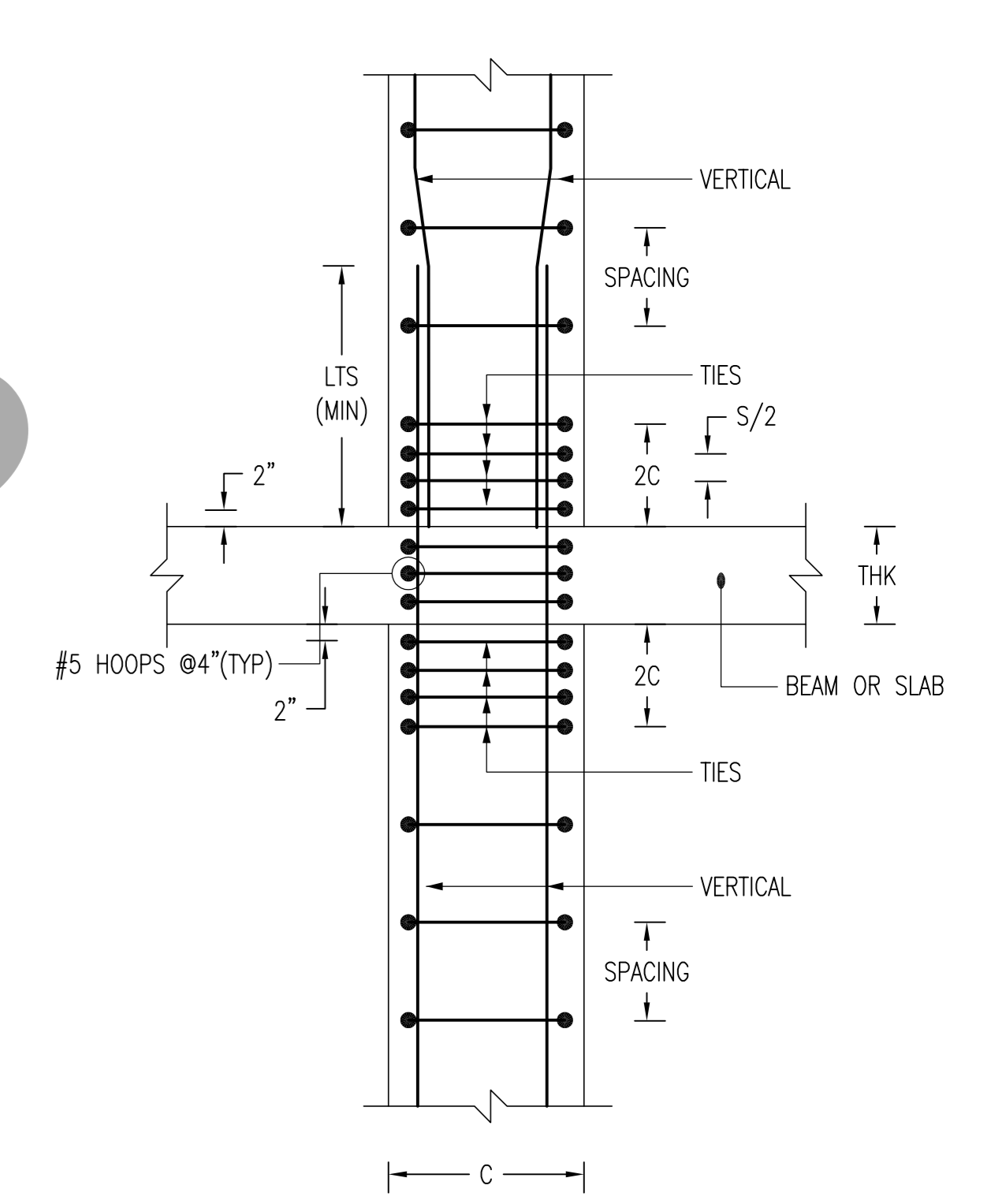
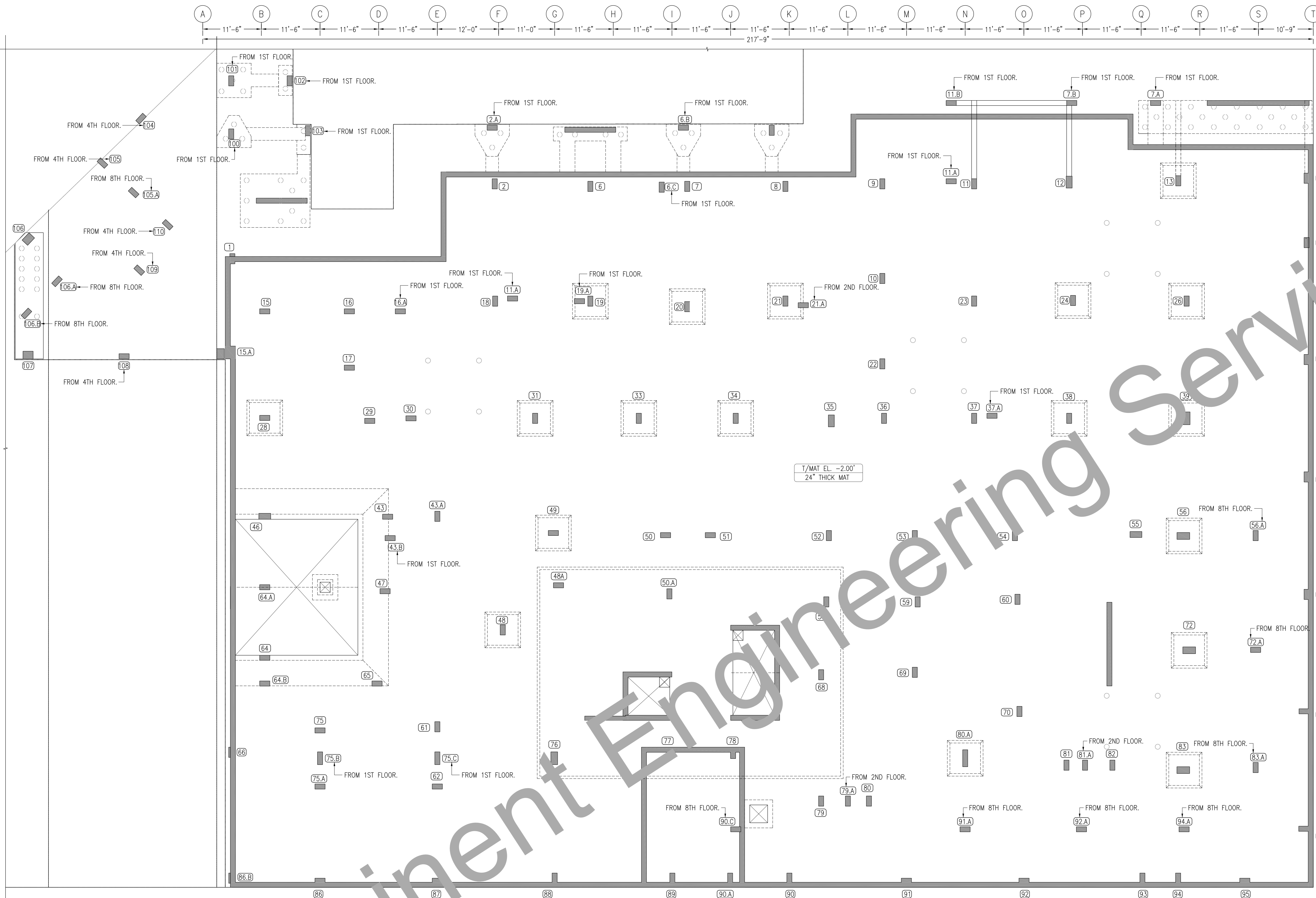
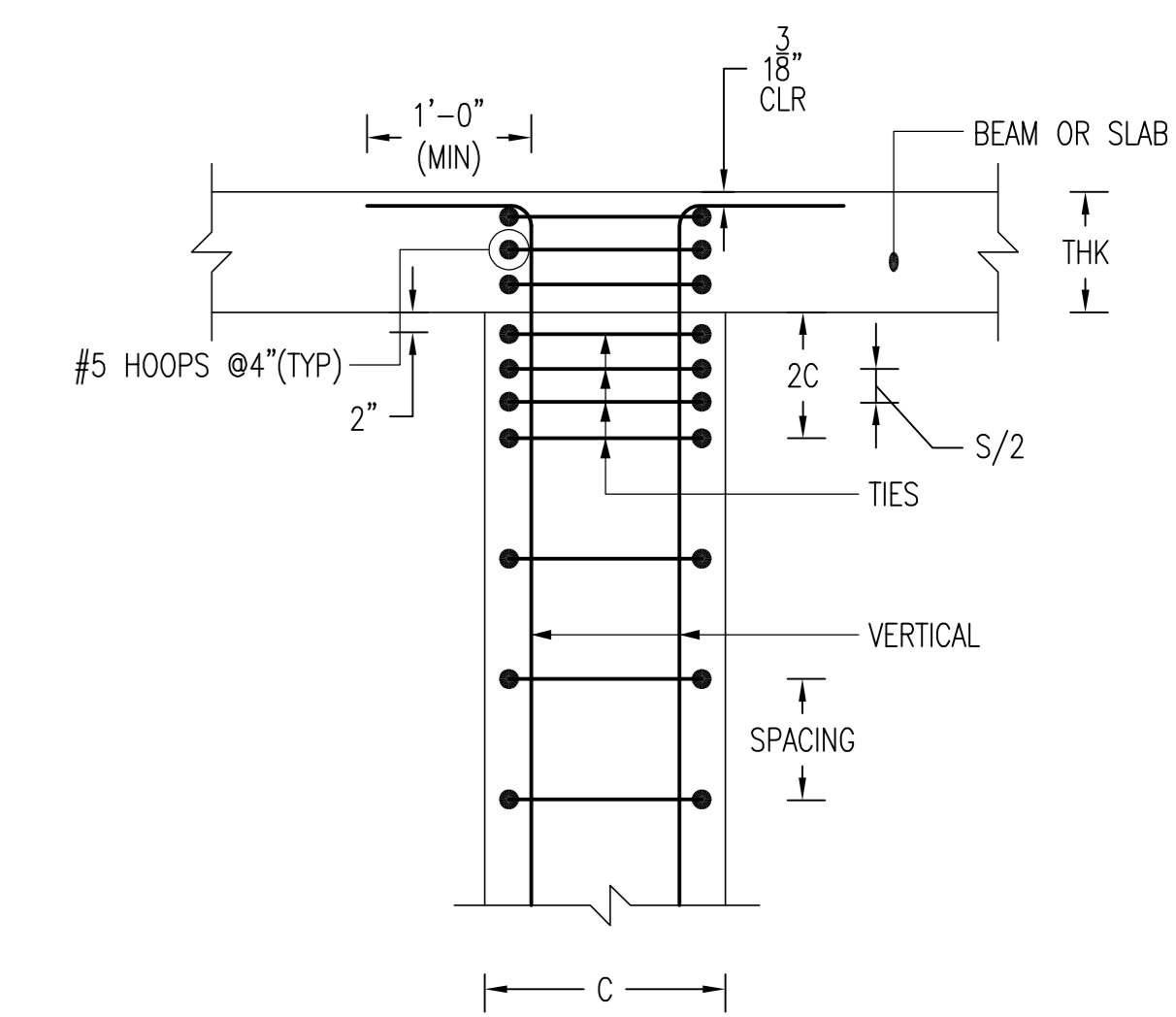


REINFORCING STEEL PLACING DRAWING ONLY. USE IN CONJUNCTION WITH CONTRACT DRAWINGS & SPECIFICATIONS. ELEVATIONS & DIMENSIONS SHOWN ON DRAWING ARE FOR DETAILING PURPOSES ONLY AND SHOULD NOT BE USED FOR CONSTRUCTION UNLESS VERIFIED BY ENGINEER OR CONTRACTOR.



TYPICAL COLUMN SECTION
 1/2"=1'-0"
 SDR: 5/S-302.00



TYPICAL COLUMN @END
 1/2"=1'-0"
 SDR: 6/S-302.00

LABEL LEGENDS

3X2X1 #5 5L01 @12" T SW	NOTES
↑	SPACING
○	BAR MARK
○	BAR DIA
○	NO OF BARS
○	EACH FACE/EACH SIDE
○	NO OF LOCATION

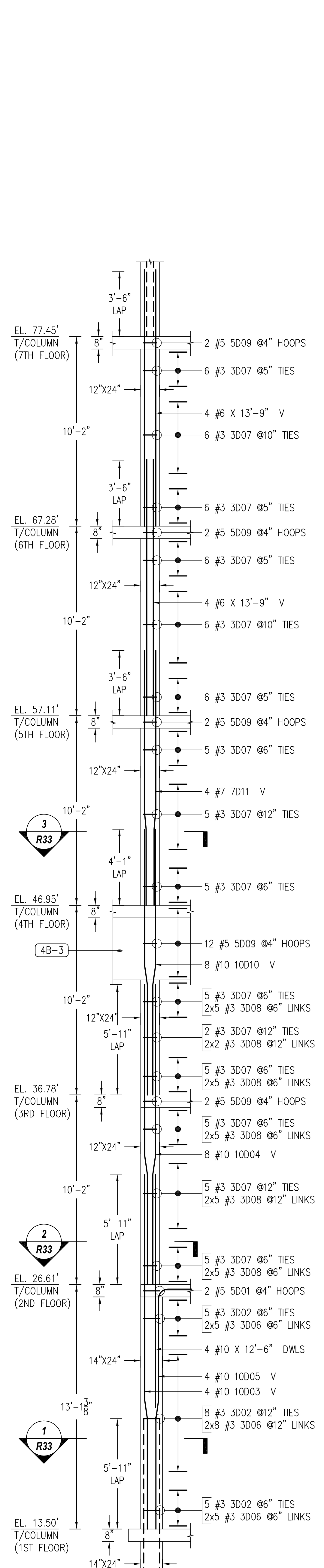
- NOTES:**
1. BOTTOM OF COLUMN LEVEL REFER ELEVATION
 2. TOP OF COLUMN LEVEL REFER ELEVATION
 3. COVER DETAILS:
 4. STOCK LENGTH USED IS 30'-0"

FOR APPROVAL

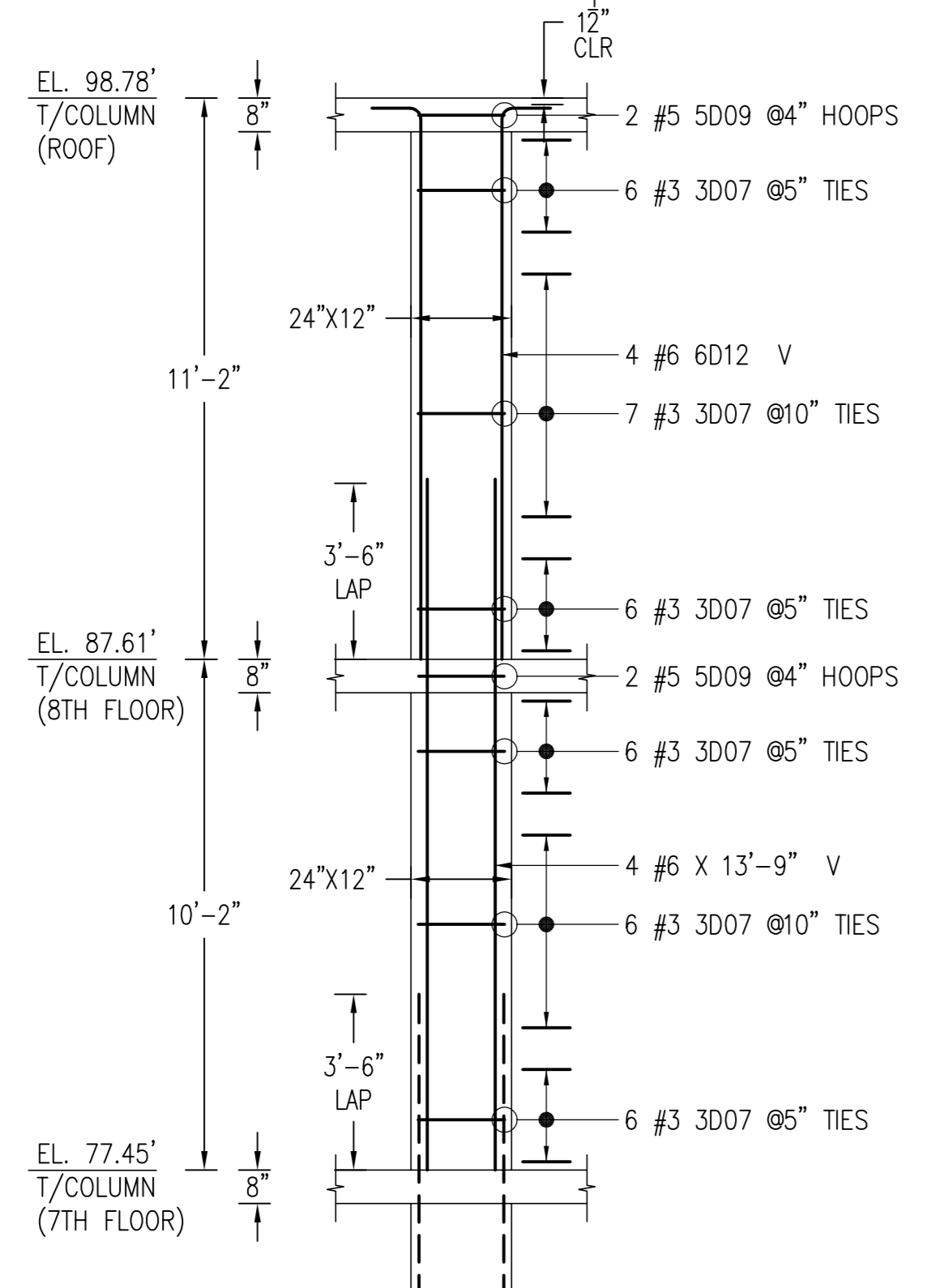
FOUNDATION TO ROOF FLOOR COLUMN KEY PLAN LAYOUT
 1/10"=1'-0"
 SDR: A&B/F-105.00

Eminent Engineering Services

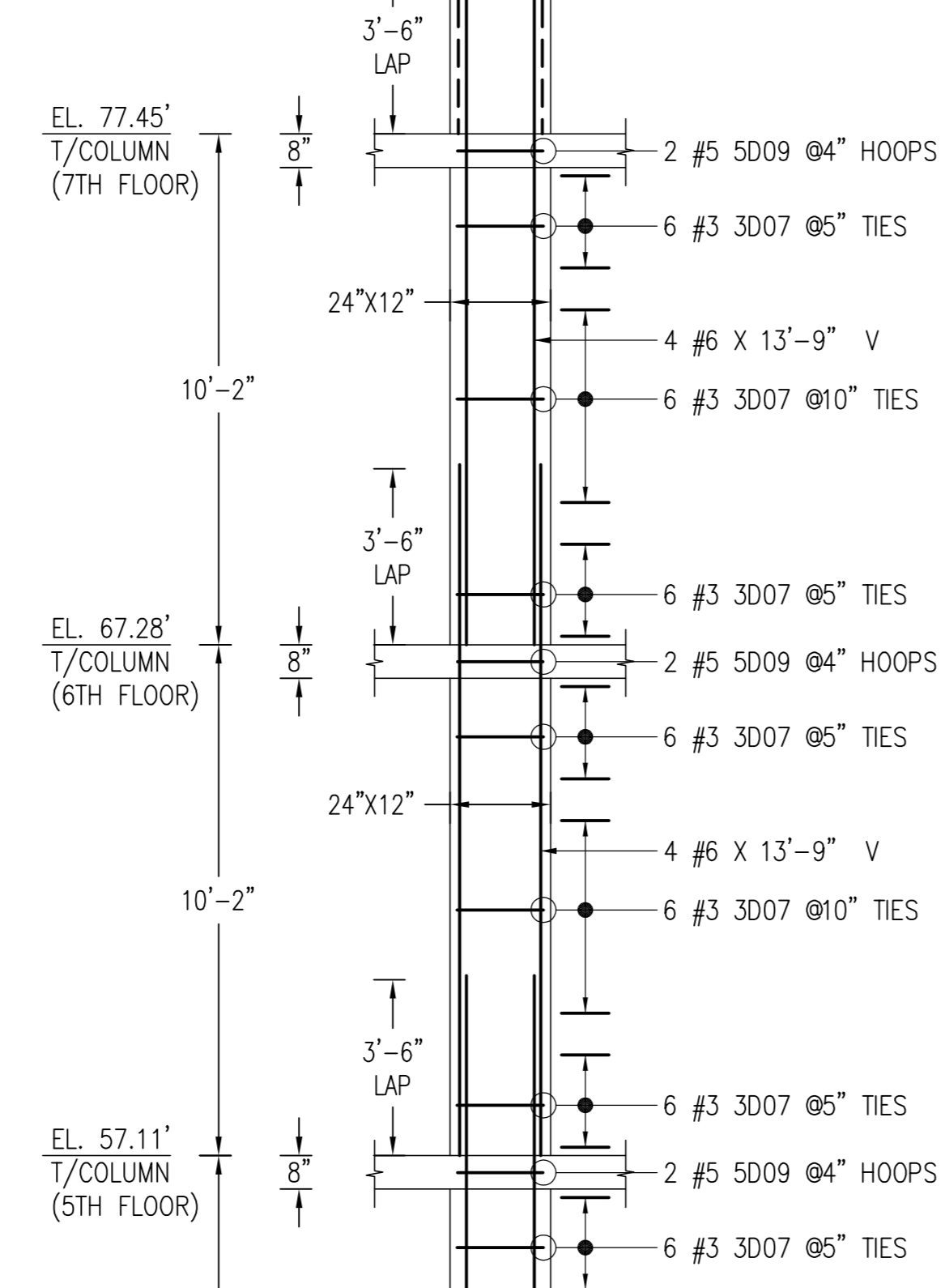
REINFORCING STEEL PLACING DRAWING ONLY. USE IN CONJUNCTION WITH CONTRACT DRAWINGS & SPECIFICATIONS. ELEVATIONS & DIMENSIONS SHOWN ON DRAWING ARE FOR DETAILING PURPOSES ONLY AND SHOULD NOT BE USED FOR CONSTRUCTION UNLESS VERIFIED BY ENGINEER OR CONTRACTOR.



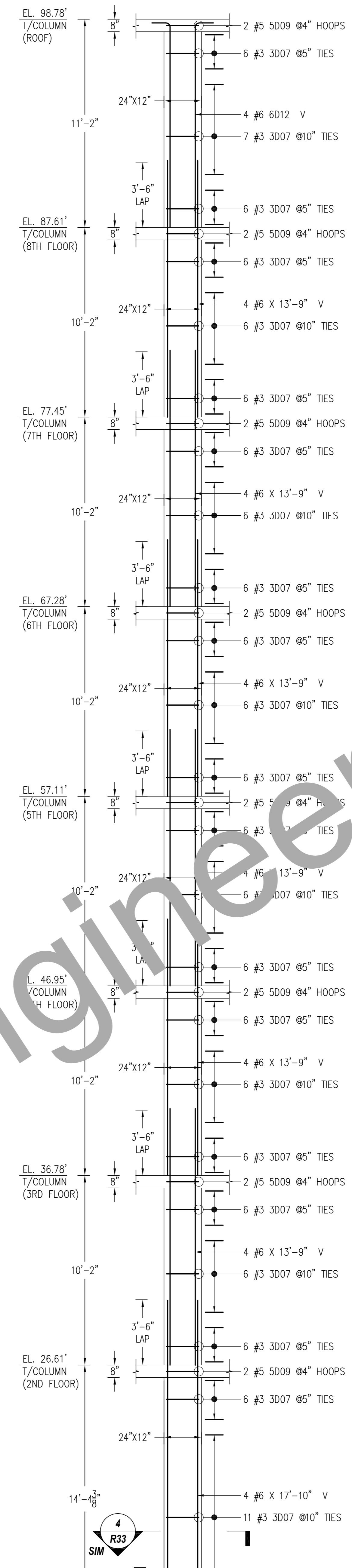
COLUMN - 1
SCALE: 1/4"=1'-0"
SDR: FO-101.01, S-002.00 - S-303.00



COLUMN - 1 (CONT.)
SCALE: 1/4"=1'-0"
SDR: FO-101.01, S-002.00 - S-303.00

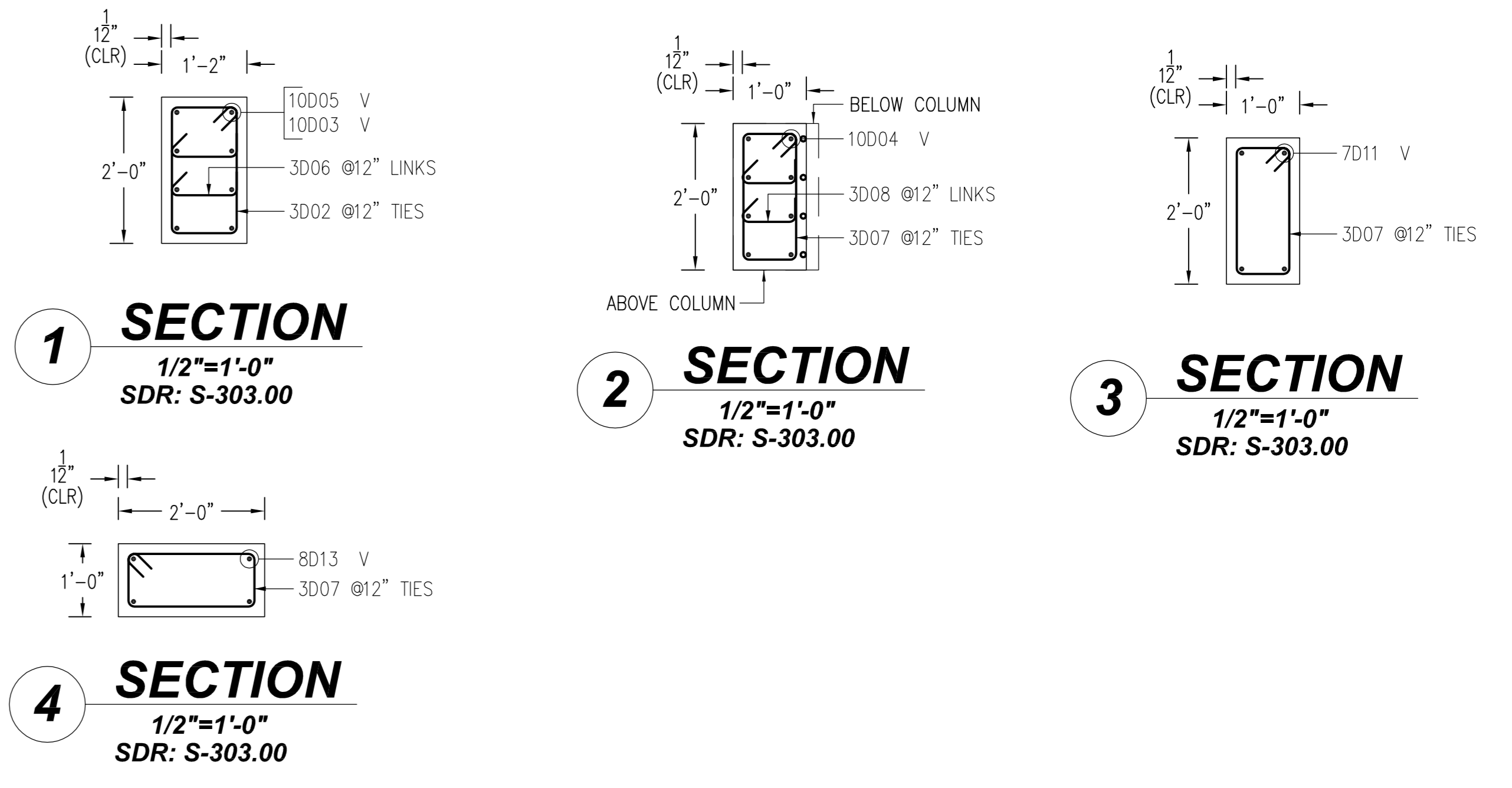


COLUMN - 2
SCALE: 1/4"=1'-0"
SDR: FO-101.01, S-002.00 - S-303.00



COLUMN - 2.A
SCALE: 1/4"=1'-0"
SDR: FO-101.01, S-002.00 - S-303.00

Bar Mark	Qty	Size	Total Length	Type	X	Y	Z	Notes
3002	18	#3	6'-0.00	T1	0'-4.00	0'-0.00	0'-0.00	
3006	36	#3	1'-0.00	T9	0'-4.00	0'-0.00	0'-0.00	
3007	408	#3	5'-8.00	T1	0'-4.00	0'-0.00	0'-0.00	
3008	54	#3	1'-5.00	T9	0'-4.00	0'-0.00	0'-0.00	
3001	2	#5	6'-3.00	T1	0'-0.00	0'-11.00	1'-0.00	
3009	48	#3	5'-11.00	T1	0'-0.00	0'-0.00	1'-0.00	
6D12	12	#6	12'-0.00	V	1'-0.00	11'-0.00	0'-0.00	
7D11	8	#7	15'-8.00	V	1'-0.00	1'-0.00	8'-0.00	
7D14	8	#7	15'-8.00	V	1'-0.00	1'-0.00	9'-0.00	
8D13	4	#8	17'-0.00	V	1'-0.00	11'-0.00	0'-0.00	
10D04	1	#10	16'-4.00	V	5'-11.00	1'-0.00	12'-1.00	
10D04	1	#10	16'-4.00	V	5'-11.00	1'-0.00	9'-2.00	
10D04	1	#10	14'-9.00	V	5'-11.00	1'-0.00	6'-0.00	
10D04	1	#10	14'-3.00	V	5'-11.00	1'-0.00	7'-4.00	



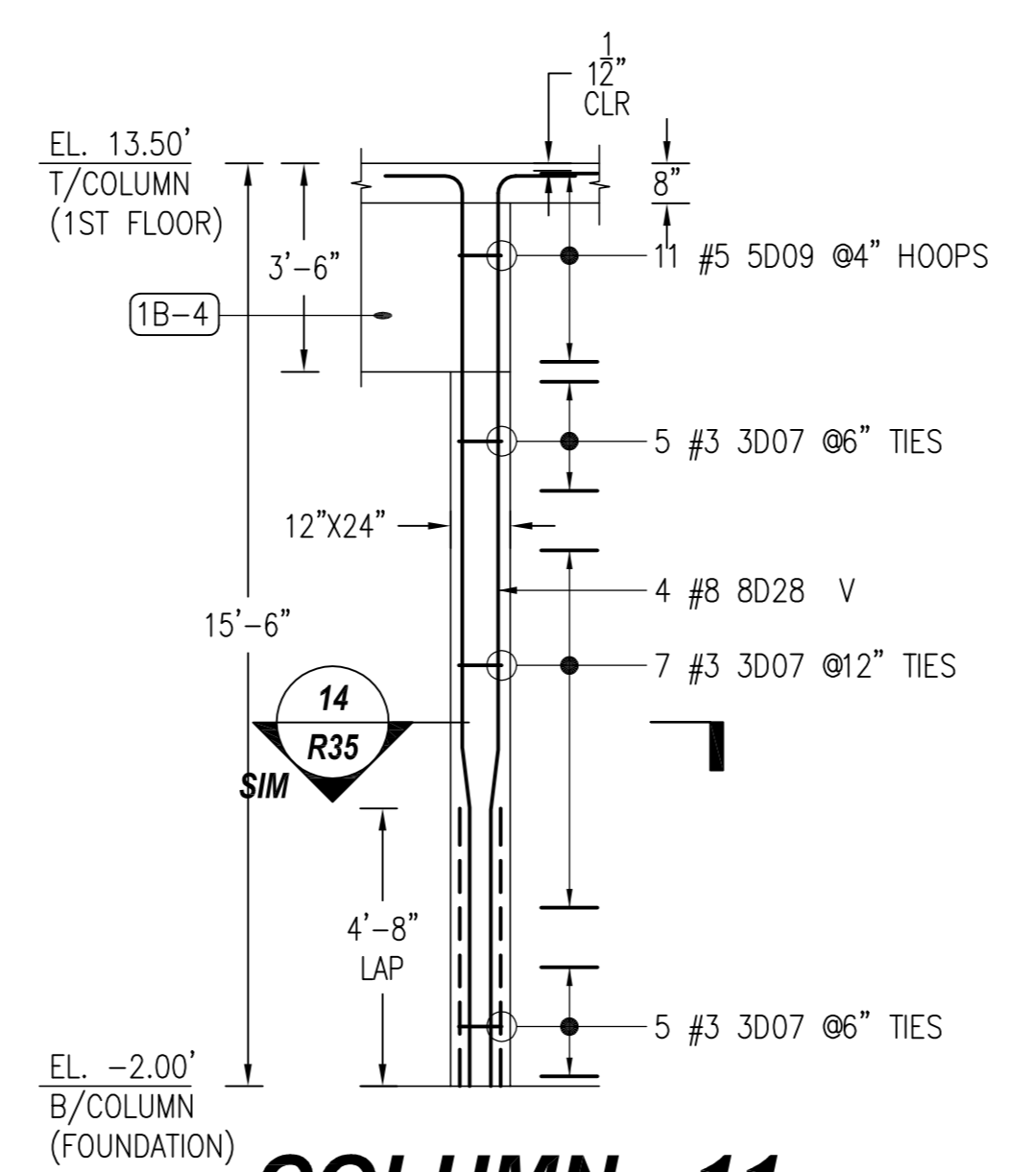
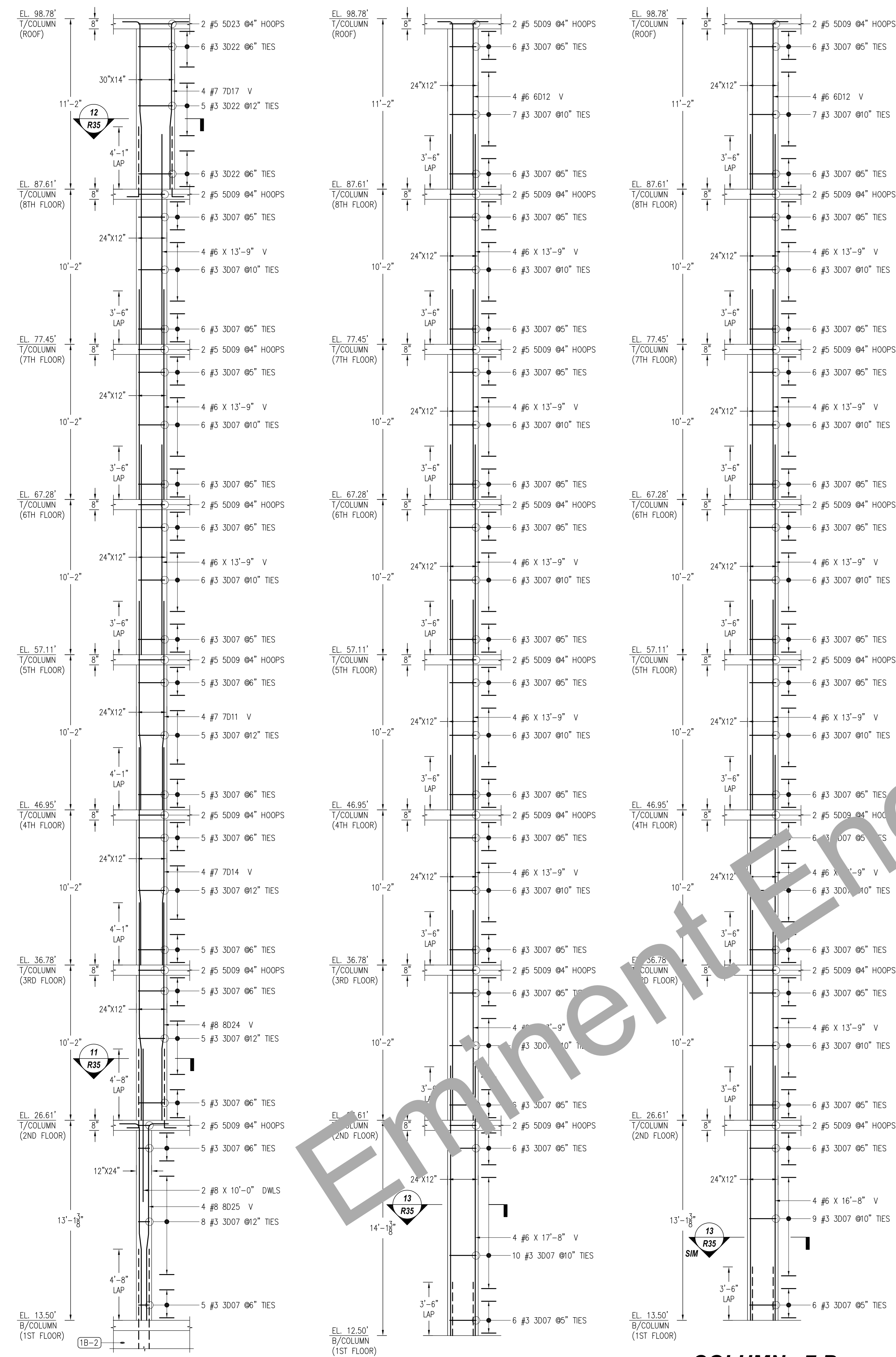
FOR APPROVAL

LABEL LEGENDS

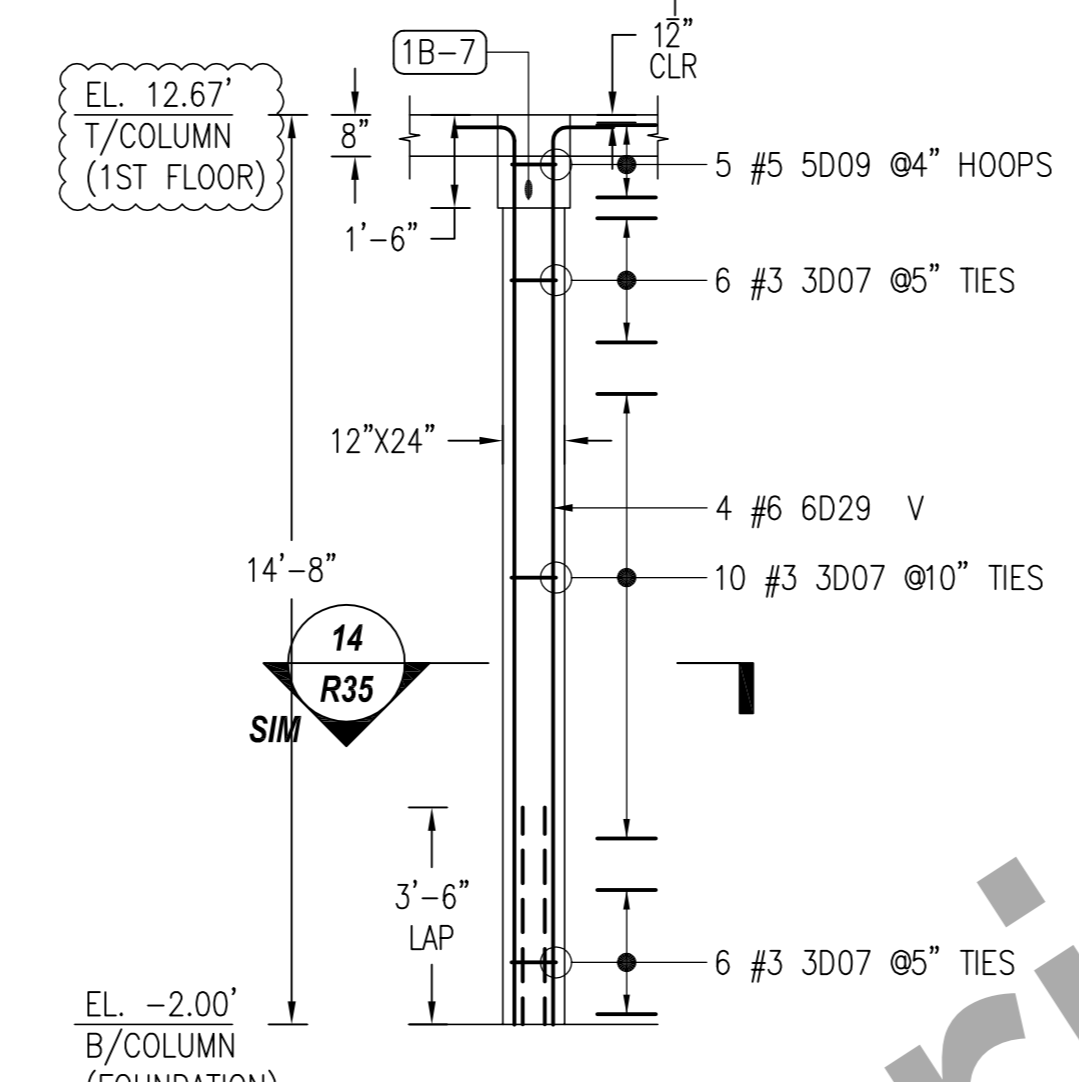
3X2X1 #5 5L01 #12" T SW	NOTES
	SPACING
	BAR MARK
	BAR DIA
	NO OF BARS
	EACH FACE/EACH SIDE
	NO OF LOCATION

NOTES:
1. BOTTOM OF COLUMN LEVEL REFER ELEVATION
2. TOP OF COLUMN LEVEL REFER ELEVATION
3. COVER DETAILS:
FOR COLUMN : TIES = 1 1/2"
4. STOCK LENGTH USED IS 30'-0"

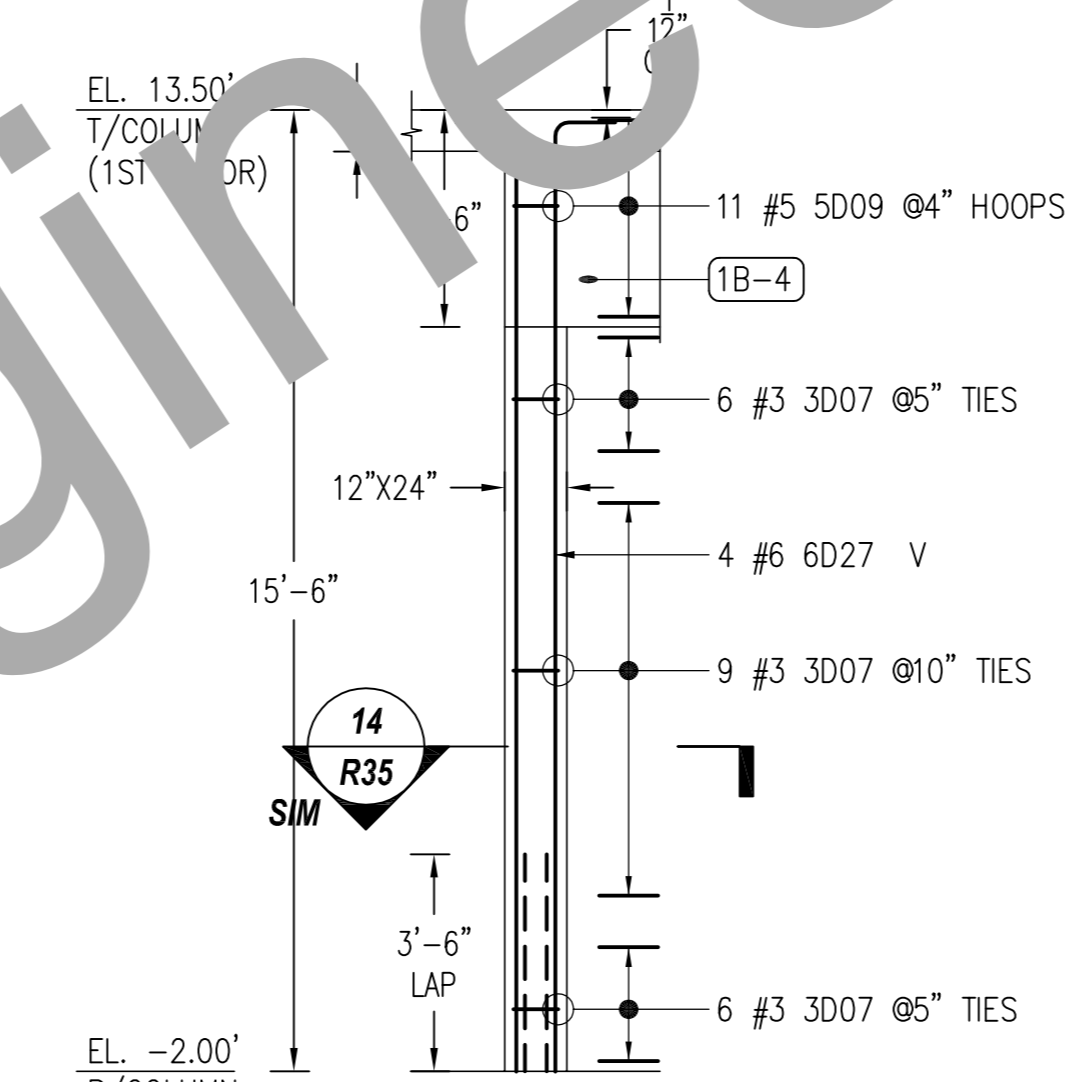
REINFORCING STEEL PLACING DRAWING ONLY. USE IN CONJUNCTION WITH CONTRACT DRAWINGS & SPECIFICATIONS. ELEVATIONS & DIMENSIONS SHOWN ON DRAWING ARE FOR DETAILING PURPOSES ONLY AND SHOULD NOT BE USED FOR CONSTRUCTION UNLESS VERIFIED BY ENGINEER OR CONTRACTOR.



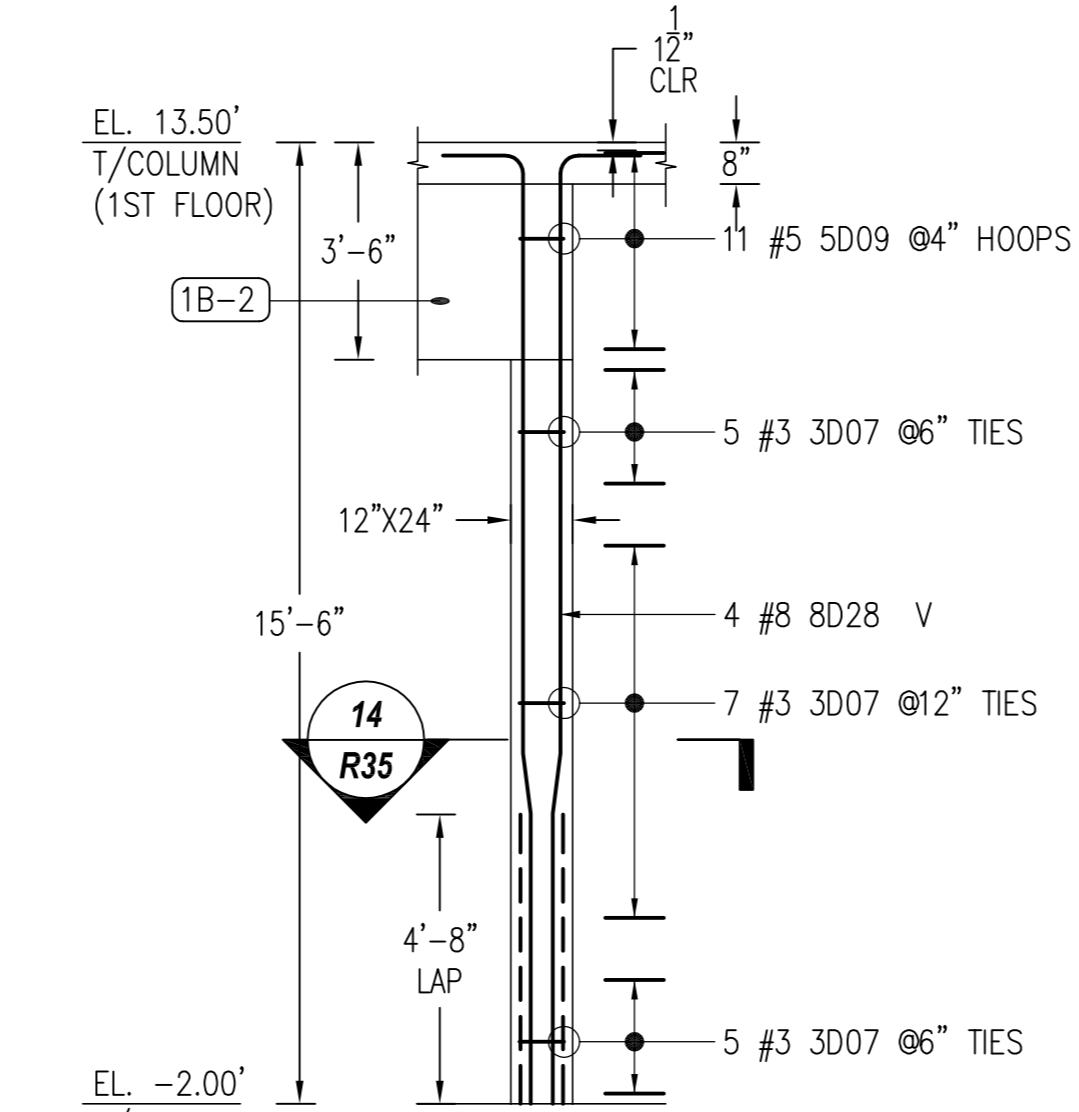
COLUMN - 11
SCALE: 1/4"=1'-0"
SDR: FO-101.01, S-002.00 - S-303.00



COLUMN - 10
SCALE: 1/4"=1'-0"
SDR: FO-101.01, S-002.00 - S-303.00

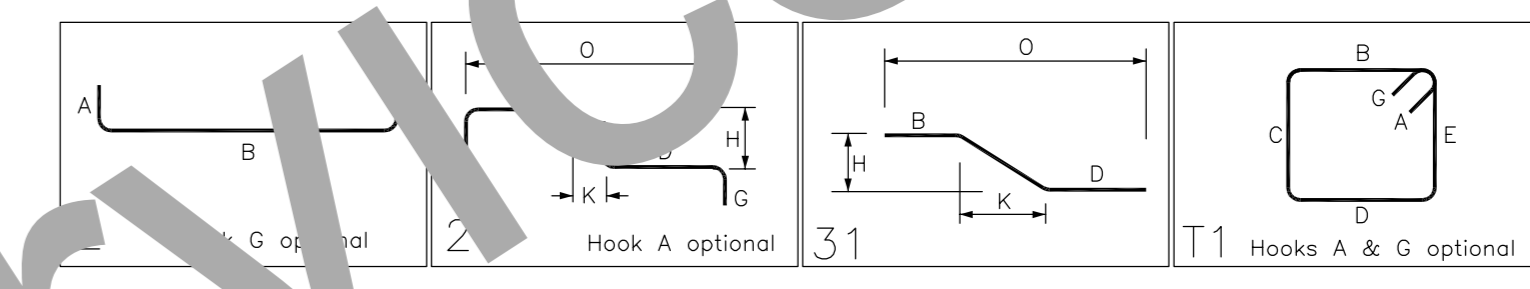


COLUMN - 9
SCALE: 1/4"=1'-0"
SDR: FO-101.01, S-002.00 - S-303.00



COLUMN - 7
SCALE: 1/4"=1'-0"
SDR: FO-101.01, S-002.00 - S-303.00

Bar Mark	Qty	Size	Total Length	Type	X'	Y'	Z'	X''	Y''	Z''	X'''	Y'''	Z'''
3007	48	#3	5'-8 1/2"	11	0'-4 1/2"	0'-9"	1'-6"	0'-9"	1'-9"	1'-9"	0'-4 1/2"	0'-9"	0'-9"
3022	17	#3	7'-4 1/2"	11	0'-4 1/2"	0'-9"	1'-6"	0'-9"	1'-9"	1'-9"	0'-4 1/2"	0'-9"	0'-9"
5009	84	#5	5'-11 1/2"	11	0'-5 1/2"	0'-9"	1'-6"	0'-9"	1'-9"	1'-9"	0'-5 1/2"	0'-9"	0'-9"
5023	2	#5	7'-7"	11	0'-5 1/2"	0'-9"	1'-6"	0'-9"	1'-9"	1'-9"	0'-5 1/2"	0'-9"	0'-9"
6012	8	#6	12'-0"	2	1'-0"	11'-0"							
6027	4	#6	16'-4 1/2"	2	1'-0"	15'-4 1/2"							
6029	4	#6	15'-4 1/2"	2	1'-0"	14'-6"							
7011	4	#7	15'-4 1/2"	31		4'-3 1/2"		5'-7 1/2"			0'-2"	1'-0"	15'-8"
7014	4	#7	14'-3 1/2"	31		4'-3 1/2"		5'-7 1/2"			0'-2"	1'-0"	14'-3 1/2"
7017	4	#7	12'-2 1/2"	27		4'-3 1/2"		5'-11"			0'-2"	1'-0"	11'-0"
8024	4	#8	14'-3 1/2"	31		4'-3 1/2"		5'-11"			0'-2 1/2"	1'-0"	14'-3 1/2"
8025	4	#8	14'-3 1/2"	27		4'-3 1/2"		5'-11"			0'-2 1/2"	1'-0"	12'-11 1/2"
8028	8	#8	14'-8 1/2"	27		4'-3 1/2"		5'-11"			1'-4 1/2"	0'-2 1/2"	15'-4 1/2"



11 SECTION
1/2"=1'-0"
SDR: S-303.00

12 SECTION
1/2"=1'-0"
SDR: S-303.00

13 SECTION
1/2"=1'-0"
SDR: S-303.00

14 SECTION
1/2"=1'-0"
SDR: S-303.00

FOR APPROVAL

LABEL LEGENDS	
	NOTES
	SPACING
	BAR MARK
	BAR DIA
	NO OF BARS
	EACH FACE/EACH SIDE
	NO OF LOCATION

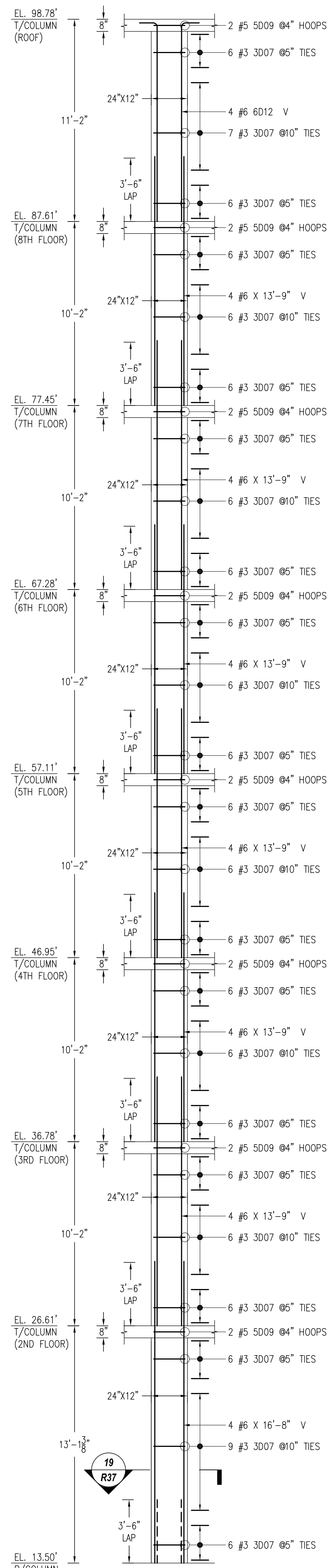
- NOTES:**
1. BOTTOM OF COLUMN LEVEL REFER ELEVATION
 2. TOP OF COLUMN LEVEL REFER ELEVATION
 3. COVER DETAILS:
FOR COLUMN : TIES = 1 1/2"
 4. STOCK LENGTH USED IS 30'-0"

COLUMN - 6.C
SCALE: 1/4"=1'-0"
SDR: FO-101.01, S-002.00 - S-303.00

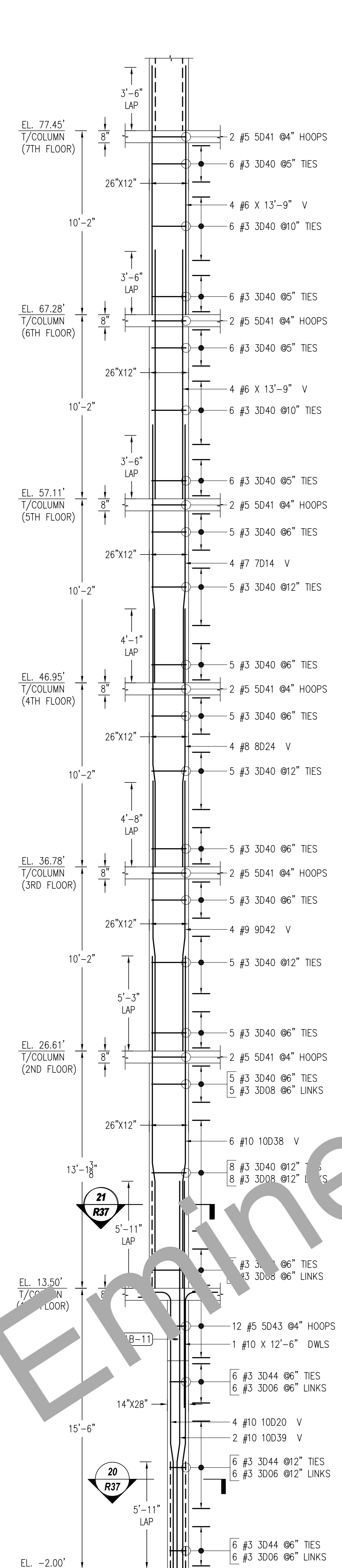
COLUMN - 7.A
SCALE: 1/4"=1'-0"
SDR: FO-101.01, S-002.00 - S-303.00

COLUMN - 7.B
SCALE: 1/4"=1'-0"
SDR: FO-101.01, S-002.00 - S-303.00

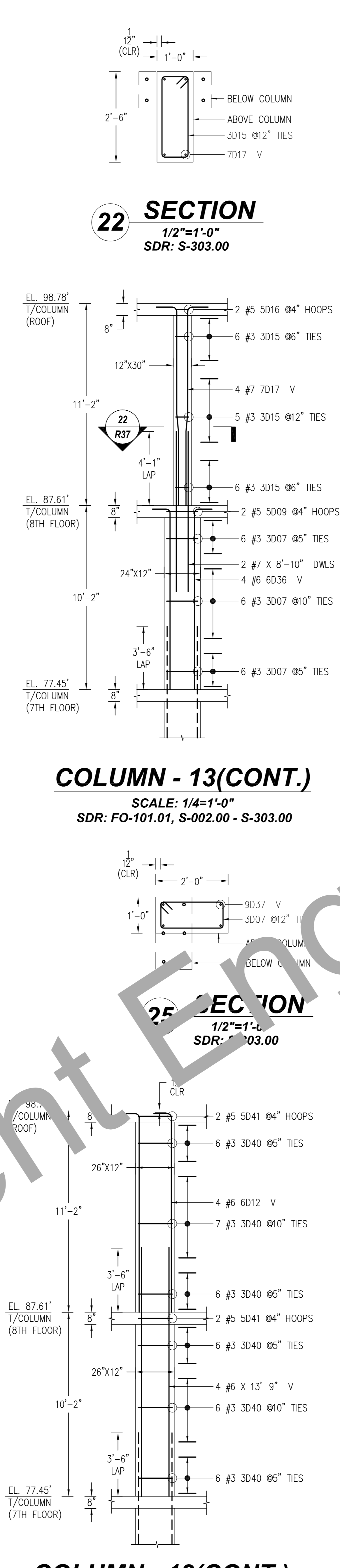
REINFORCING STEEL PLACING DRAWING ONLY. USE IN CONJUNCTION WITH CONTRACT DRAWINGS & SPECIFICATIONS. ELEVATIONS & DIMENSIONS SHOWN ON DRAWING ARE FOR DETAILING PURPOSES ONLY AND SHOULD NOT BE USED FOR CONSTRUCTION UNLESS VERIFIED BY ENGINEER OR CONTRACTOR.



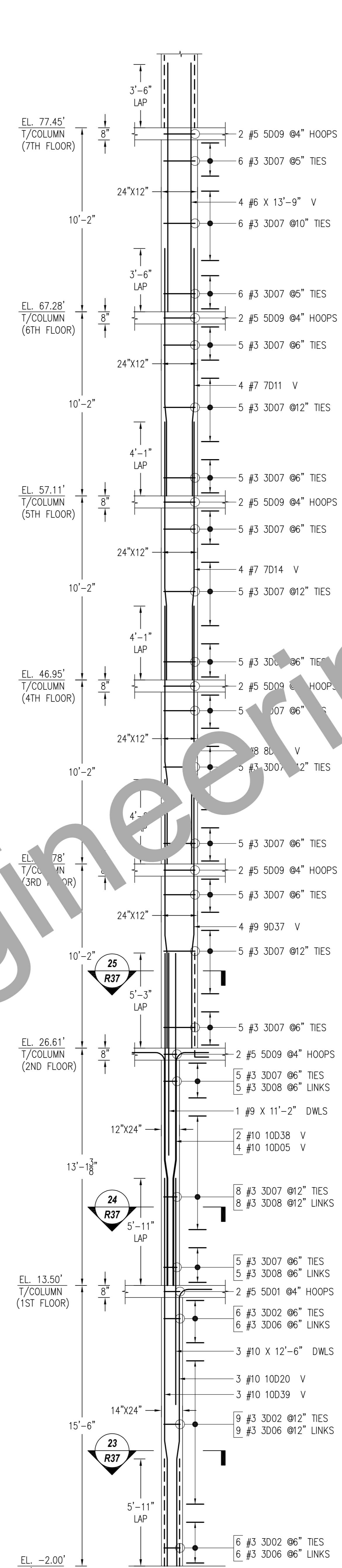
COLUMN - 11.B
SCALE: 1/4"=1'-0"
SDR: FO-101.01, S-002.00 - S-303.00



COLUMN - 12
SCALE: 1/4"=1'-0"
SDR: FO-101.01, S-002.00 - S-303.00



COLUMN - 13 (CONT.)
SCALE: 1/4"=1'-0"
SDR: FO-101.01, S-002.00 - S-303.00



COLUMN - 13
SCALE: 1/4"=1'-0"
SDR: FO-101.01, S-002.00 - S-303.00

22 SECTION
1/2"=1'-0"
SDR: S-303.00

COLUMN - 13 (CONT.)
SCALE: 1/4"=1'-0"
SDR: FO-101.01, S-002.00 - S-303.00

25 SECTION
1/2"=1'-0"
SDR: S-303.00

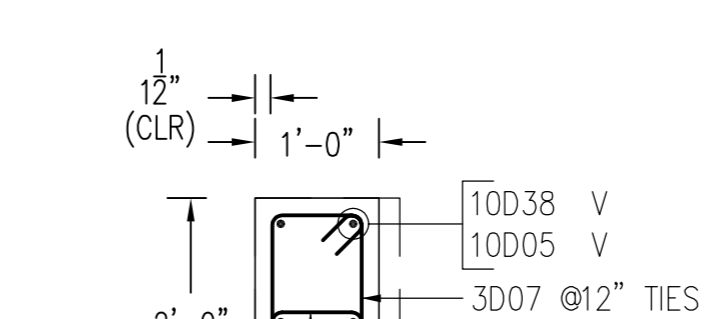
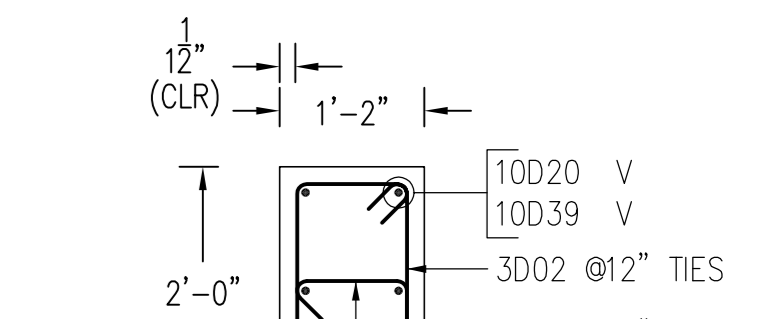
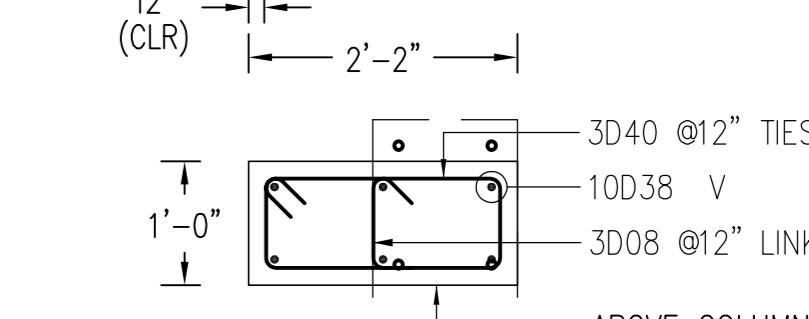
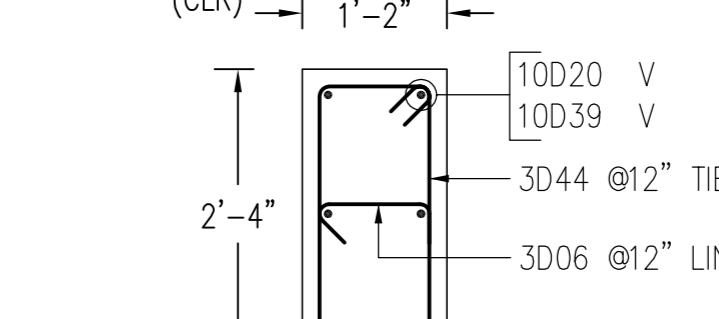
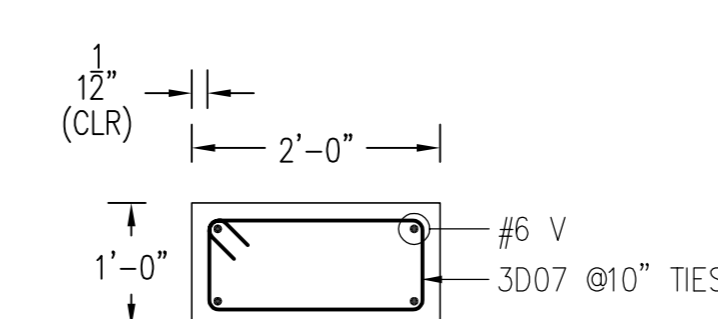
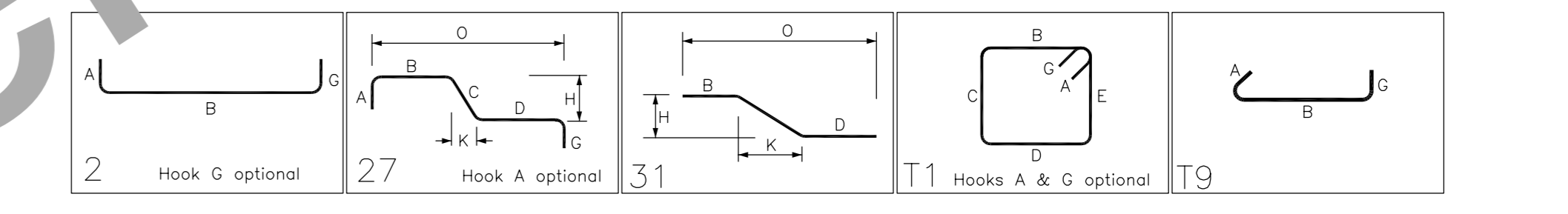
19 SECTION
1/2"=1'-0"
SDR: S-303.00

20 SECTION
1/2"=1'-0"
SDR: S-303.00

21 SECTION
1/2"=1'-0"
SDR: S-303.00

23 SECTION
1/2"=1'-0"
SDR: S-303.00

Bar Mark	Qty	Size	Total Length	Type	X	Y	Z	BAR LIST	W	V	U	T	S	R	Q	P	O	N	M	L	K	J	I	H	G	F	E	D	C	B	A
3002	21	#3	6-0.8'	T1	0-4.4'	0-11'	0-11'	0-11'	1-9'	1-9'	0-4.4'																				
3006	39	#3	1-3.4'	T1	0-4.4'	0-11'	0-11'	0-11'	1-9'	1-9'	0-4.4'																				
3007	262	#3	5-8.4'	T1	0-4.4'	0-9'	0-9'	1-9'	0-9'	1-9'	0-4.4'																				
3008	36	#3	1-5.4'	T1	0-4.4'	0-9'	0-9'	1-9'	0-9'	1-9'	0-4.4'																				
3015	17	#3	6-8.4'	T1	0-4.4'	0-9'	0-9'	2-3'	0-9'	2-3'	0-4.4'																				
3040	136	#3	6-0.8'	T1	0-4.4'	0-9'	0-9'	1-11'	0-9'	1-11'	0-4.4'																				
3044	18	#3	6-8.4'	T1	0-4.4'	0-11'	0-11'	2-3'	0-11'	2-3'	0-4.4'																				
5001	2	#5	8-3'	T1	0-5.4'	0-11'	0-11'	0-11'	1-9'	1-9'	0-5.4'																				
5009	30	#5	5-11'	T1	0-5.4'	0-11'	0-11'	1-9'	0-9'	1-9'	0-5.4'																				
5016	2	#5	6-11'	T1	0-5.4'	0-11'	0-11'	0-9'	0-9'	0-9'	0-5.4'																				
5041	16	#5	6-3'	T1	0-5.4'	0-11'	0-11'	0-11'	1-9'	1-9'	0-5.4'																				
5043	12	#5	6-11'	T1	0-5.4'	0-11'	0-11'	0-11'	2-3'	2-3'	0-5.4'																				
5012	8	#5	12-9'	T2	1-0'	11-0'	11-0'	11-0'	11-0'	11-0'	1-0'																				
6036	4	#6	11-0'	T2	1-0'	10-0'	10-0'	10-0'	10-0'	10-0'	1-0'																				
7011	4	#7	8-3'	T1	1-0'	8-7'	8-7'	8-7'	8-7'	8-7'	1-0'																				
7014	8	#7	31'	T1	1-0'	9-2'	9-2'	9-2'	9-2'	9-2'	1-0'																				
7017	4	#7	31'	T1	1-0'	9-2'	9-2'	9-2'	9-2'	9-2'	1-0'																				
8014	8	#8	14-3.4'	T1	4-8'	1-0.4'	8-7'	8-7'	8-7'	8-7'	1-0.4'																				
8016	4	#8	14-10.4'	T1	5-3'	1-0.4'	8-7'	8-7'	8-7'	8-7'	1-0.4'																				
9042	4	#9	14-11.4'	T1	5-3'	1-0.4'	8-7'	8-7'	8-7'	8-7'	1-0.4'																				
10006	10	#10	14-9.4'	T1	5-11'	1-0.4'	6-0'	6-0'	6-0'	6-0'	1-10'																				
10020	7	#10	7-2.4'	T1	5-11'	1-0.4'	8-5'	8-5'	8-5'	8-5'	1-10'																				
10038	8	#10	18-4.4'	T1	5-11'	1-0.4'	11-5'	11-5'	11-5'	11-5'	1-10'																				
10039	5	#10	21-5.4'	T1	5-11'	1-0.4'	14-6'	14-6'	14-6'	14-6'	1-10'																				



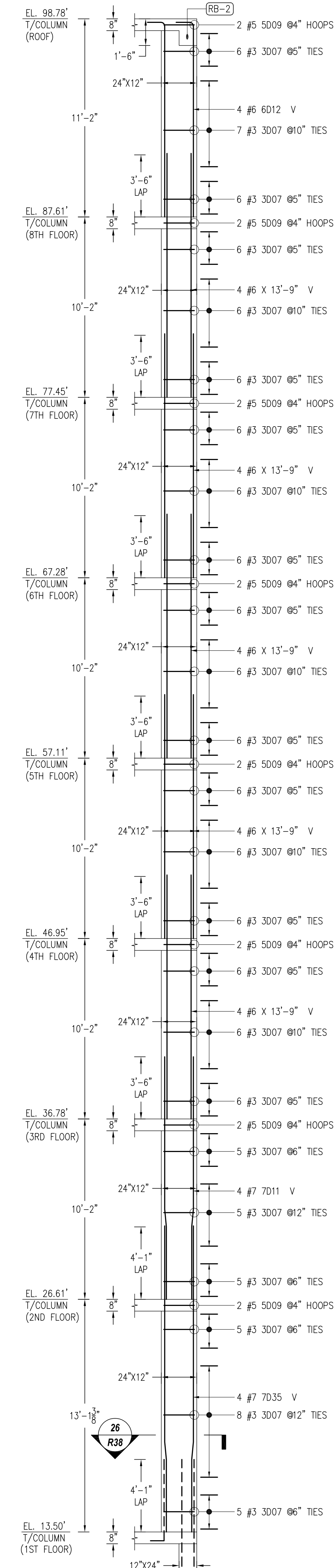
FOR APPROVAL

LABEL LEGENDS

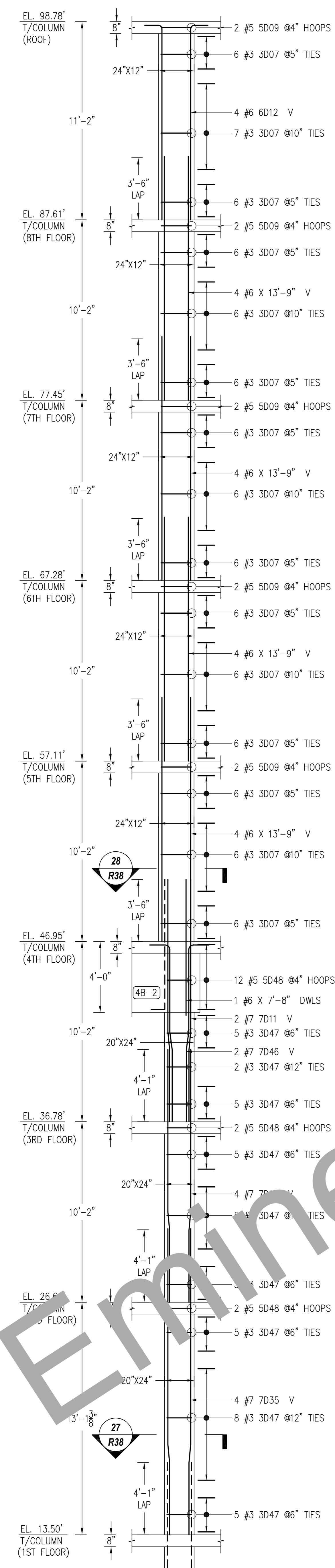
3X2X1 #5 5L01 @12" T SW	NOTES
	SPACING
	BAR MARK
	BAR DIA
	NO OF BARS
	EACH FACE/EACH SIDE
	NO OF LOCATION

NOTES:
1. BOTTOM OF COLUMN LEVEL REFER ELEVATION
2. TOP OF COLUMN LEVEL REFER ELEVATION
3. COVER DETAILS:
FOR COLUMN : TIES = 1 1/2"
4. STOCK LENGTH USED IS 30'-0"

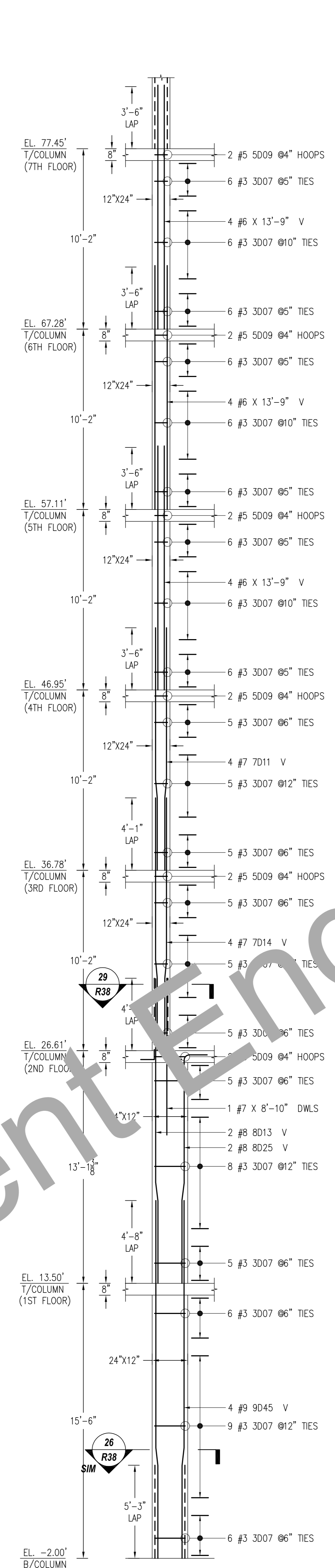
REINFORCING STEEL PLACING DRAWING ONLY. USE IN CONJUNCTION WITH CONTRACT DRAWINGS & SPECIFICATIONS. ELEVATIONS & DIMENSIONS SHOWN ON DRAWING ARE FOR DETAILING PURPOSES ONLY AND SHOULD NOT BE USED FOR CONSTRUCTION UNLESS VERIFIED BY ENGINEER OR CONTRACTOR.



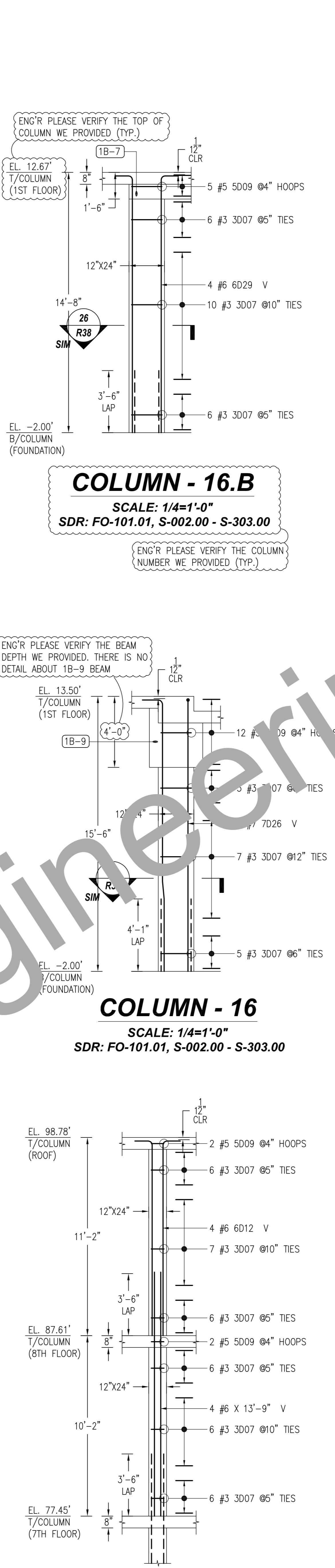
COLUMN - 14
SCALE: 1/4"=1'-0"
SDR: FO-101.01, S-002.00 - S-303.00



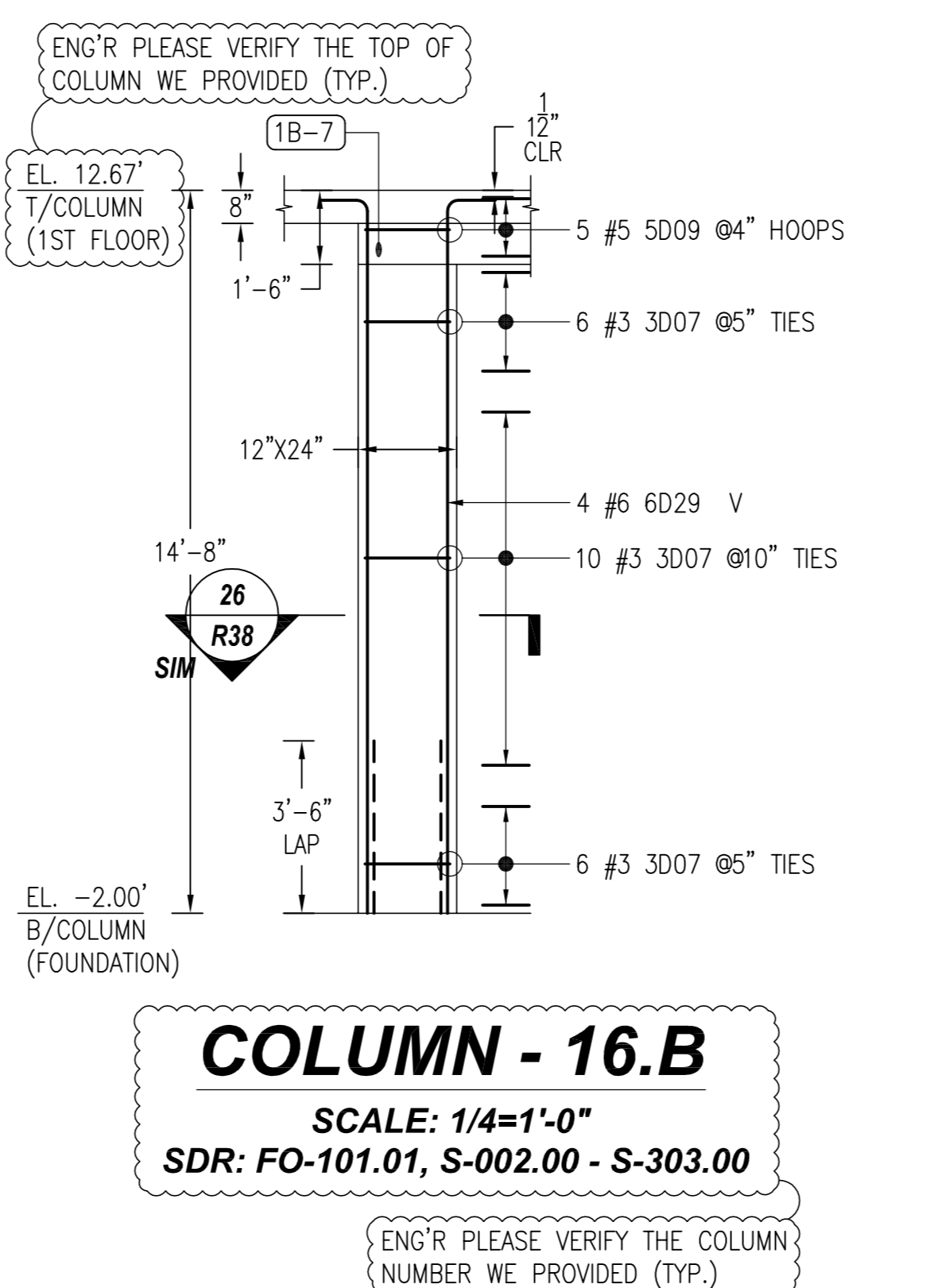
COLUMN - 15.A
SCALE: 1/4"=1'-0"
SDR: FO-101.01, S-002.00 - S-303.00



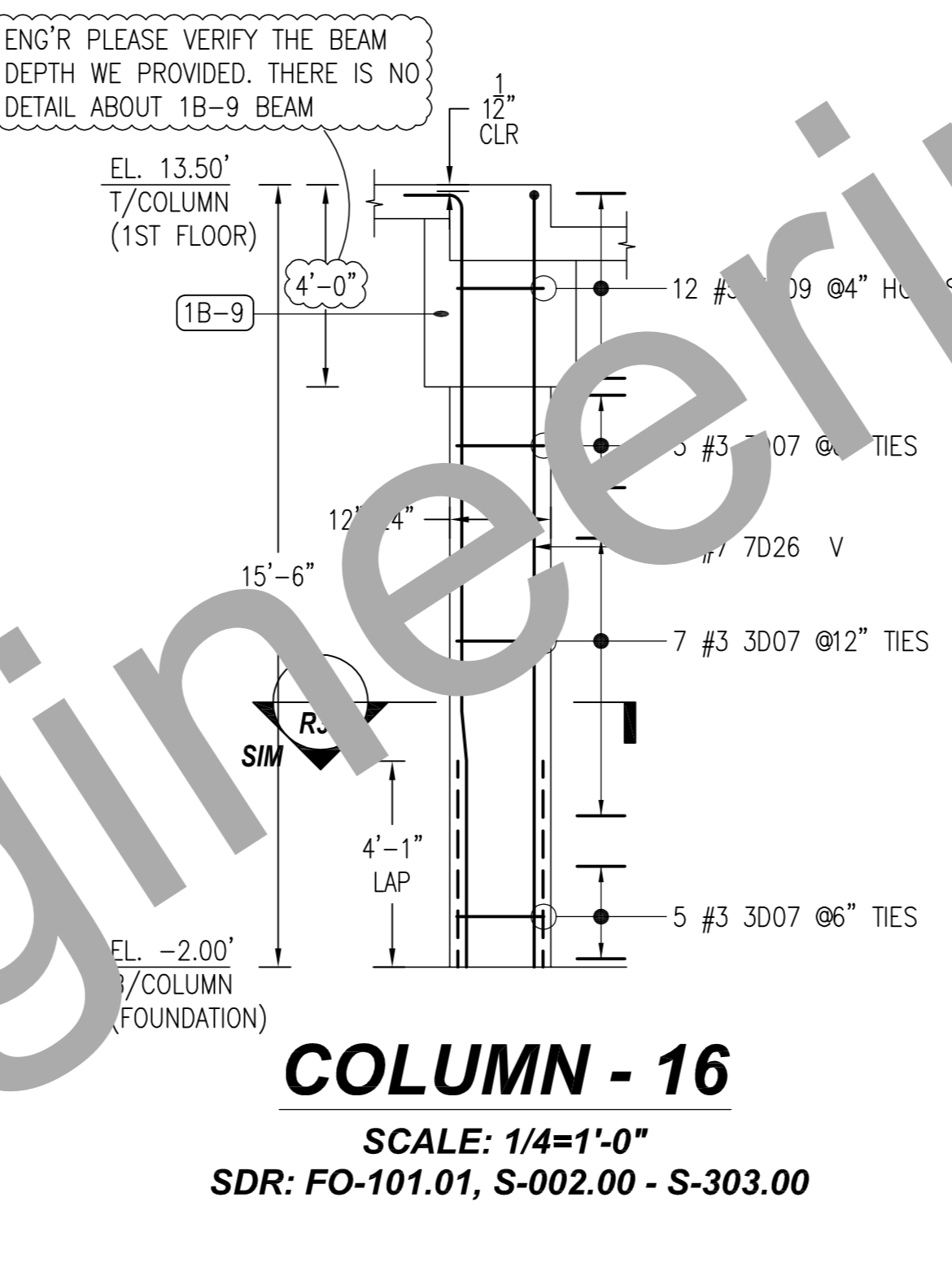
COLUMN - 15
SCALE: 1/4"=1'-0"
SDR: FO-101.01, S-002.00 - S-303.00



COLUMN - 15(CONT.)
SCALE: 1/4"=1'-0"
SDR: FO-101.01, S-002.00 - S-303.00



COLUMN - 16.B
SCALE: 1/4"=1'-0"
SDR: FO-101.01, S-002.00 - S-303.00



COLUMN - 16
SCALE: 1/4"=1'-0"
SDR: FO-101.01, S-002.00 - S-303.00

Bar Mark	Qty	Size	Total Length	Type	X'	Y'	Z'	U'	V'	W'	X''	Y''	Z''	U''	V''	W''
3007	432	#3	5'-8.8"	11	0'-4.8"	0'-9"	1'-9"	0'-9"	1'-9"	0'-9"	1'-9"	0'-9"	1'-9"	0'-9"	1'-9"	0'-9"
3047	48	#3	7'-0.8"	11	0'-4.8"	1'-5"	1'-9"	1'-9"	1'-9"	0'-4"	1'-9"	0'-4"	1'-9"	0'-4"	1'-9"	0'-4"
5009	58	#5	5'-11"	11	0'-5.8"	0'-9"	1'-9"	0'-9"	1'-9"	0'-5"	1'-9"	0'-5"	1'-9"	0'-5"	1'-9"	0'-5"
5048	18	#5	7'-3"	11	0'-5.8"	1'-5"	1'-9"	1'-9"	1'-9"	0'-5"	1'-9"	0'-5"	1'-9"	0'-5"	1'-9"	0'-5"
6D12	12	#6	12'-0"	2	1'-0"	11'-0"	1'-9"	1'-9"	1'-9"	1'-9"	1'-9"	1'-9"	1'-9"	1'-9"	1'-9"	1'-9"
6D29	4	#6	15'-6"	2	1'-0"	14'-0"	1'-9"	1'-9"	1'-9"	1'-9"	1'-9"	1'-9"	1'-9"	1'-9"	1'-9"	1'-9"
7D11	18	#7	15'-8"	31	1'-0"	11'-0"	1'-9"	1'-9"	1'-9"	1'-9"	1'-9"	1'-9"	1'-9"	1'-9"	1'-9"	1'-9"
7D14	8	#7	14'-3"	31	1'-0"	11'-0"	1'-9"	1'-9"	1'-9"	1'-9"	1'-9"	1'-9"	1'-9"	1'-9"	1'-9"	1'-9"
7D6	4	#7	16'-8"	22	1'-0"	11'-0"	1'-9"	1'-9"	1'-9"	1'-9"	1'-9"	1'-9"	1'-9"	1'-9"	1'-9"	1'-9"
7D5	8	#7	17'-3"	31	1'-0"	11'-0"	1'-9"	1'-9"	1'-9"	1'-9"	1'-9"	1'-9"	1'-9"	1'-9"	1'-9"	1'-9"
7D6	2	#7	11'-2"	2	1'-0"	11'-0"	1'-9"	1'-9"	1'-9"	1'-9"	1'-9"	1'-9"	1'-9"	1'-9"	1'-9"	1'-9"
8D13	2	#8	17'-2"	31	1'-0"	11'-0"	1'-9"	1'-9"	1'-9"	1'-9"	1'-9"	1'-9"	1'-9"	1'-9"	1'-9"	1'-9"
8D25	2	#8	14'-3"	27	1'-0"	11'-0"	1'-9"	1'-9"	1'-9"	1'-9"	1'-9"	1'-9"	1'-9"	1'-9"	1'-9"	1'-9"
9D45	2	#9	14'-3"	31	1'-0"	11'-0"	1'-9"	1'-9"	1'-9"	1'-9"	1'-9"	1'-9"	1'-9"	1'-9"	1'-9"	1'-9"
9D5	2	#9	14'-3"	31	1'-0"	11'-0"	1'-9"	1'-9"	1'-9"	1'-9"	1'-9"	1'-9"	1'-9"	1'-9"	1'-9"	1'-9"

26 SECTION
1/2"=1'-0"
SDR: S-303.00

27 SECTION
1/2"=1'-0"
SDR: S-303.00

28 SECTION
1/2"=1'-0"
SDR: S-303.00

29 SECTION
1/2"=1'-0"
SDR: S-303.00

FOR APPROVAL

LABEL LEGENDS

3X2X1 #5 5011 #12 T SW	NOTES
↑	SPACING
↑	BAR MARK
↑	BAR DIA
↑	NO OF BARS
↑	EACH FACE/EACH SIDE
↑	NO OF LOCATION

- NOTES:**
1. BOTTOM OF COLUMN LEVEL REFER ELEVATION
 2. TOP OF COLUMN LEVEL REFER ELEVATION
 3. COVER DETAILS:
FOR COLUMN: TIES = 1 1/2"
 4. STOCK LENGTH USED IS 30'-0"

